

Where student success is everyone's business.



State Director's Corner:

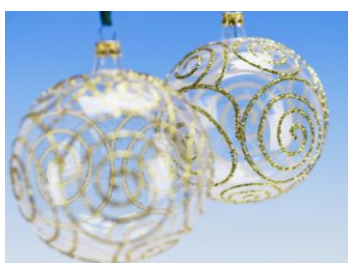
Valerie Fischer Director of Adult Education

Christmas is fast approaching and with it comes a hectic season of shopping, baking, decorating, parties and families. Take time to reflect upon a year well spent; look ahead with optimism and hope for 2011 and all that it will offer. Take care of yourselves and take care of each other in your family, friends and community circles. Notice now nice people can be in holiday greetings and the kindness we have for the less fortunate – wouldn't it be great to have that feeling beyond a single season?

Many of our students this year will be thankful they are in a better place than they were before. They have received two important but simple gifts: they have increased their self sufficiency and self esteem through the power of learning and they have been given unconditional regard through your relationships.

I say it often and truly mean it – you are the best that education offers and I'm grateful for the hard work you do and the differences you make in the lives of so many.

Merry Christmas and Happy New Year.



ACT or WorkKeys for GED Grads

Inform GED students wanting to pursue post-secondary education that they can take the ACT or WorkKeys assessment and be eligible for the \$6000 scholarship (according to the following criteria). GED students need to collaborate with the district point of contact to reaffirm the dates of testing and location.

SECTION 25. A new section to chapter 15.1-21 of the North Dakota Century Code is created and enacted as follows:

Summative assessment - General educational development diploma - Selection - Cost.

1. Except as otherwise provided, each student pursuing a general educational development diploma may take the ACT or three WorkKeys assessments recommended by the Department of Career and Technical Education and approved by the Superintendent of Public Instruction. The student shall determine which summative assessment to take. The school district in which the student resides at the time the student takes the summative assessment is responsible for the cost of one summative assessment and its administration per student.

2. The student's career advisor or guidance counselor shall meet with the student to review the student's assessment results.

3. This section is applicable only to a student who has not reached the age of twenty-one before August first of the year of enrollment.

Technology Tool Tip

If you are making a tutorial or manual this tip can help with capturing the screen!!

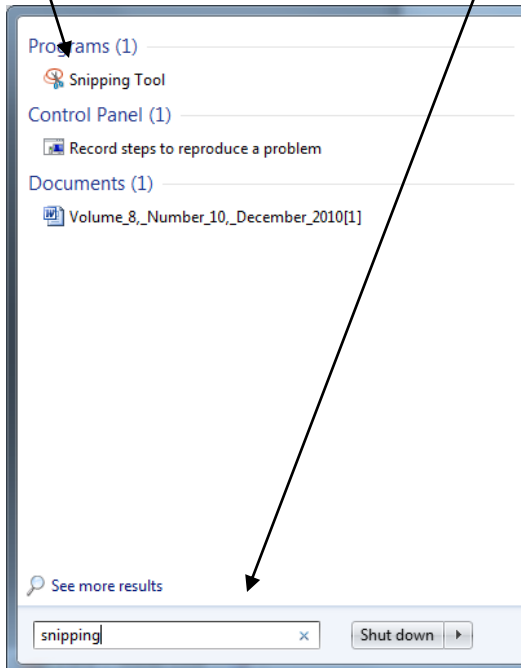
Print Screen: To make a picture of the screen you are viewing press the “insert/prt sc” on the keyboard. This is found on the top row towards the right. You are now able to paste the copy to Word, etc.

Alt + Print Screen: Captures only the active window. You are now able to paste the active window to a word processor, etc.

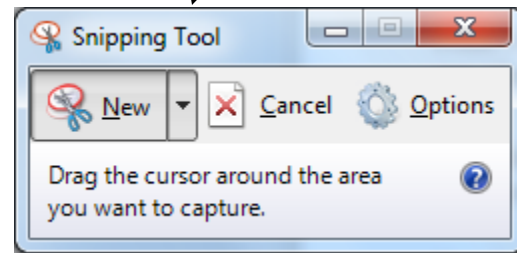
Fn plus insert: If your keyboard does not have the prt sc you can hold the fn + insert button to do the same as above.

Snipping Tool (Windows 7):

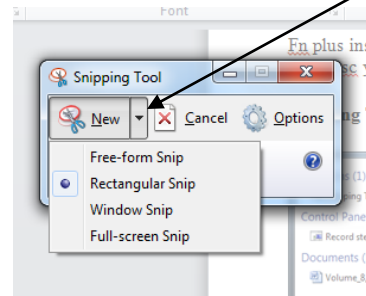
The snipping tool allows you to capture exactly what you want to copy!! To find the Snipping Tool type in snipping in the search bar. The snipping logo will appear.



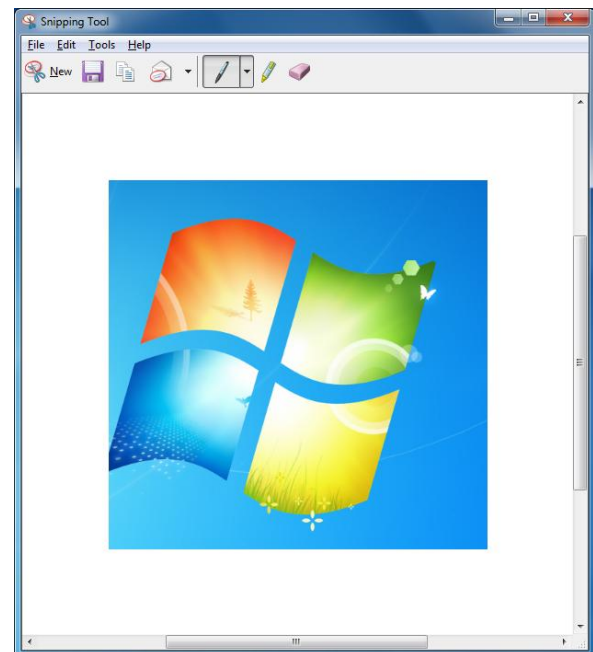
Click on the logo and the snipping tool window will appear.



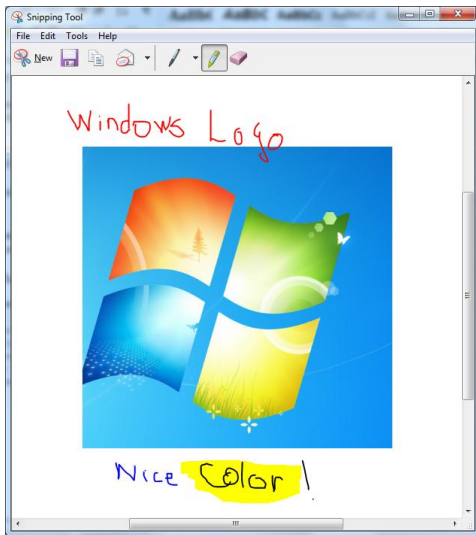
Choose which shape you wish to use for the snip by clicking on the down arrow.



I chose the logo on the desktop to snip. Now I can save, copy, email, use different color pen, highlight, or erase by using the choices in the toolbar.



Example of writing, and highlighting.



For more detailed information go to the following websites:

<http://snippingtool.net/>

<http://windows.microsoft.com/en-US/windows-vista/Use-Snipping-Tool-to-capture-screen-shots>

<http://www.youtube.com/watch?v=Aib-0d0o4jk&feature=related>

English Language Learners

Laurel Kaae had the opportunity to meet and discuss ELL with Katya Marandino Irish, Great Falls, MT Adult Learning Center. Katya works with the ELL students in Great Falls and is willing to share some of her websites that she finds helpful.

How to Teach

[Adult Education ESL Teachers Guide](#). An online book for new ESL teachers by C. Ray Graham & Mark M. Walsh.

<http://humanities.byu.edu/elc/Teacher/TeacherGuideMain.html>

[Bright Ideas for Teaching ESL](#). Classroom materials, and 41 tips for ESL teachers.
<http://www.eslmania.com/teacher/teacher.htm>

More from Katya in January Newsletter!

America is woven of many strands. I would recognize them and let it so remain. Our fate is to become one, and yet many. This is not prophecy, but description.

Ralph Ellison

Funding Career Pathways Tool Kit Available

A new federal policy tool kit, *Funding Career Pathways and Career Pathway Bridges: A Federal Policy Toolkit for States*, is available to help state interagency teams identify and use federal resources to support career pathways and bridges for out-of-school youths and adults. Developed by CLASP's Center for Postsecondary and Economic Success, the tool kit aims to help states understand key tasks involved in developing, implementing, and maintaining career pathways and bridges; identify how federal resources can support these tasks; and perceive needed state policy changes or actions.

<http://www.clasp.org/admin/site/publications/files/FundingCareerPathwaysFederalPolicyToolkitforStates.pdf>

<http://www.clasp.org/postsecondary/>